

# ALPINE SHALLOW 3.5IN

## A1RD-A46, A1RD-A56 Adjustable Trim



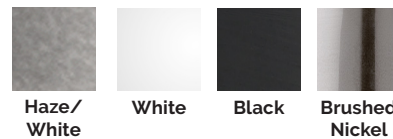
Fixture Type:

Catalog Number:

Project:

Location:

### FINISHES



| Model                                  | Beam |     | Color Temp |                | CRI      | Lumens     | CBCP         | Finish   |
|--|------|-----|------------|----------------|----------|------------|--------------|--|
| A1RD-A46 (Round)                       | S    | 15° | 27<br>30   | 2700K<br>3000K | 90<br>90 | 880<br>920 | 4415<br>4590 | HZWT Haze/White<br>WT White<br>BKWT Black<br>BN Brushed Nickel |
|  | N    | 25° | 27<br>30   | 2700K<br>3000K | 90<br>90 | 925<br>965 | 3350<br>3485 |  |
|  | F    | 50° | 27<br>30   | 2700K<br>3000K | 90<br>90 | 875<br>910 | 1465<br>1525 |  |
| A1RD-A56 (Square)                      | S    | 15° | 27<br>30   | 2700K<br>3000K | 90<br>90 | 830<br>865 | 4675<br>4860 |  |
|  | N    | 25° | 27<br>30   | 2700K<br>3000K | 90<br>90 | 870<br>905 | 3335<br>3470 |  |
|  | F    | 50° | 27<br>30   | 2700K<br>3000K | 90<br>90 | 820<br>855 | 1480<br>1540 |  |
| A1RD-A6_---<br>Example: A1RD-A46S-27WT |      |     |            |                |          |            |              |  |

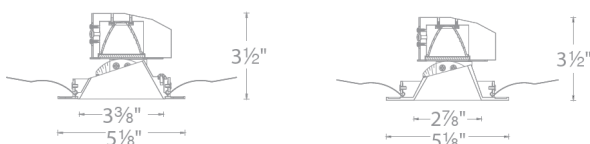
### DESCRIPTION

Shallow housing that is designed to fit in tight plenum spaces without sacrificing lumen output.

### FEATURES

- 0° - 30° adjustable range
- Designed to fit in tight plenum
- Damp location listed for trims
- 3.5" trim aperture, 3.5" housing height
- Universal input voltage (120V-277V)
- 5 year WAC Lighting product warranty

### LINE DRAWING

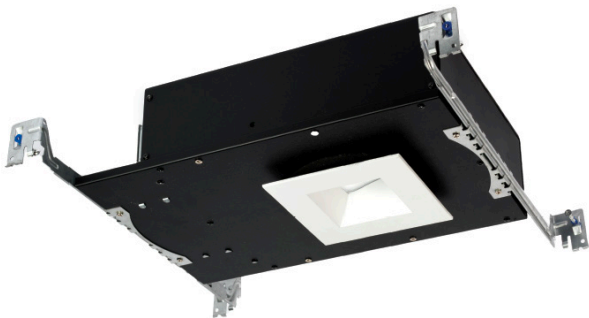


### SPECIFICATIONS

|                           |   |
|---------------------------|---|
| <b>Construction:</b>      | Die-cast aluminum trim with extruded aluminum heat sink                           |
| <b>Dimming:</b>           | 100% - 0% with 0-10V dimmer<br>100% - 5% with Electronic Low Voltage (ELV) dimmer |
| <b>Input:</b>             | 120V-277V AC  |
| <b>Power:</b>             | 15.5W, power factor 0.98  |
| <b>Mounting:</b>          | Retention clips firmly hold trim to housing                                       |
| <b>Ceiling thickness:</b> | 1/2" - 1 1/2"   |
| <b>Standards:</b>         | ETL & cETL Listed, Damp location listed trims<br>IC-rated airtight housing        |

# ALPINE SHALLOW 3.5IN

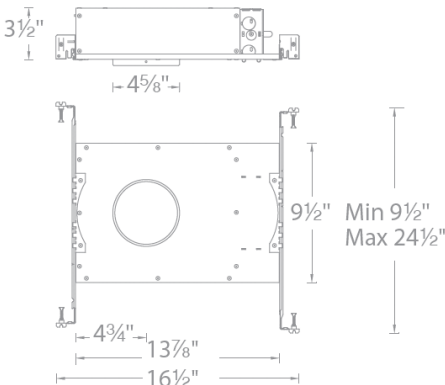
## A1RD-268 *Housing*



Model

|                   |  |
|-------------------|--|
| A1RD-268          | New Construction<br>IC-rated, Airtight |
| Example: A1RD-268 |  |

### LINE DRAWING



# ALPINE SHALLOW 3.5IN

## A1RD-366 *Housing*



Model

|                   |                           |
|-------------------|---------------------------|
| A1RD-366          | Remodel<br>non IC - Rated |
| Example: A1RD-366 |                           |

### LINE DRAWING

