

ALPINE SHALLOW 3.5IN

A1RD-D46, A1RD-D56 Downlight Trim



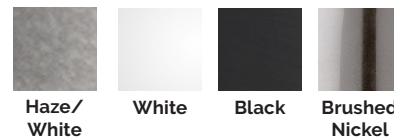
Fixture Type:

Catalog Number:

Project:

Location:

FINISHES



Model	Beam		Color Temp		CRI	Lumens	CBCP	Finish
A1RD-D46 (Round)	N	25°	27 30	2700K 3000K	90 90	940 980	2930 3050	HZWT Haze/White WT White BKWT Black/White BN Brushed Nickel
	F	45°	27 30	2700K 3000K	90 90	900 940	1356 1410	
A1RD-D56 (Square)	N	25°	27 30	2700K 3000K	90 90	940 980	2930 3050	
	F	45°	27 30	2700K 3000K	90 90	900 940	1356 1410	
A1RD-D_6_-__ Example: A1RD-D56N-27WT								

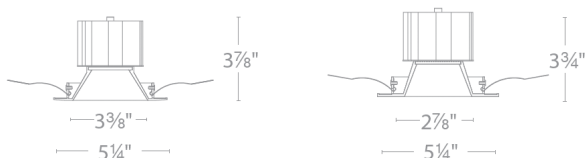
DESCRIPTION

Shallow housing that is designed to fit in tight plenum spaces without sacrificing lumen output.

FEATURES

- Designed to fit in tight plenum
- Wet location listed for trims
- 3.5" trim aperture, 3.5" housing height
- 35° cut-off angle
- Universal input voltage (120V-277V)
- 5 year WAC Lighting product warranty
- Title 24 Compliant

LINE DRAWING

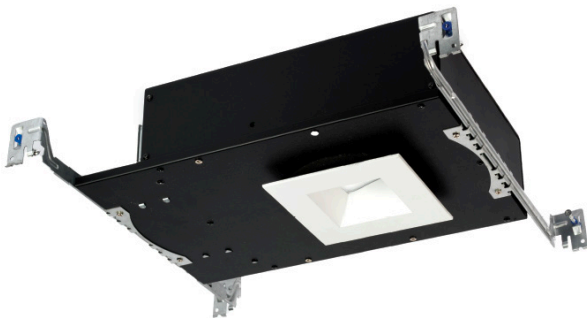


SPECIFICATIONS

Construction:	Die-cast aluminum trim with extruded aluminum heat sink
Dimming:	100% - 0% with 0-10V dimmer 100% - 5% with Electronic Low Voltage (ELV) dimmer
Input:	120V-277V AC
Power:	15.5W, power factor 0.98
Mounting:	Powder coated white, black and white, enamel coated haze, brushed nickel.
Ceiling thickness:	1/2" - 1 1/2"
Standards:	ETL & cETL Listed, Damp location listed trims IC-rated airtight housing

ALPINE SHALLOW 3.5IN

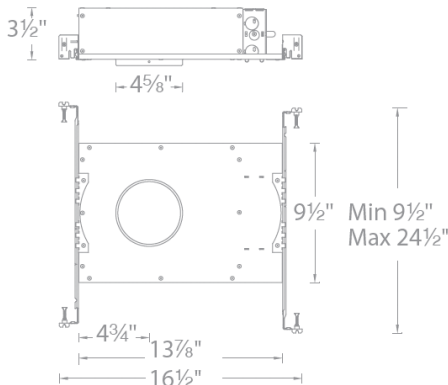
A1RD-268 *Housing*



Model

A1RD-268	New Construction IC-rated, Airtight
Example: A1RD-268	

LINE DRAWING



ALPINE SHALLOW 3.5IN

A1RD-446 *Housing*



Model

A1RD-446	Remodel IC-rated, Airtight
Example: A1RD-446	

LINE DRAWING

