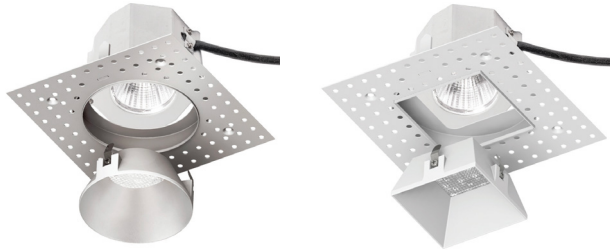


ALPINE SHALLOW 3.5IN

A1RD-D47, A1RD-D57 Trimless Downlight



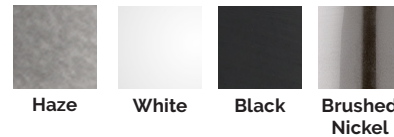
Fixture Type:

Catalog Number:

Project:

Location:

FINISHES



Model	Beam		Color Temp		CRI	Lumens	CBCP	Finish
A1RD-D47 Round	N	25°	27 30	2700K 3000K	90 90	940 980	2930 3050	HZ Haze WT White BK Black BN Brushed Nickel
	F	45°	27 30	2700K 3000K	90 90	900 940	1356 1410	
A1RD-D57 Square	N	25°	27 30	2700K 3000K	90 90	940 980	2930 3050	
	F	45°	27 30	2700K 3000K	90 90	900 940	1356 1410	
A1RD-D_7_-_____ Example: A1RD-D47N-27WT								

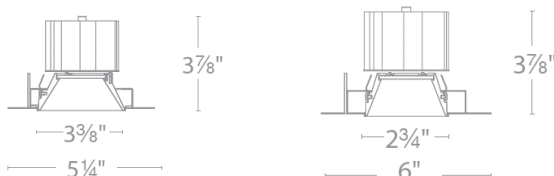
DESCRIPTION

Shallow housing that is designed to fit in tight plenum spaces without sacrificing lumen output.

FEATURES

- Designed to fit in tight plenum
- Wet location listed for trims
- 3.5" trim aperture, 3.5" housing height
- 35° cut-off angle
- Universal input voltage (120V-277V)
- 5 year WAC Lighting product warranty
- Title 24 Compliant

LINE DRAWING

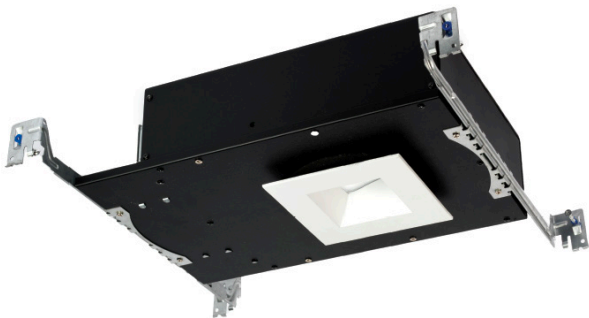


SPECIFICATIONS

Construction:	Die-cast aluminum trim with extruded aluminum heat sink
Dimming:	100% - 0% with 0-10V dimmer 100% - 5% with Electronic Low Voltage (ELV) dimmer
Input:	120V-277V AC
Power:	15.5W, power factor 0.98
Mounting:	Retention clips firmly hold trim to housing
Finish:	Powder coated black, white, enamel coated haze, brushed nickel.
Standards:	ETL & cETL Listed, Wet location listed trims IC-rated airtight housing
Ceiling thickness:	1/2" - 1 1/2"

ALPINE SHALLOW 3.5IN

A1RD-268 *Housing*



Model

A1RD-268	New Construction IC-rated, Airtight
Example: A1RD-268	

LINE DRAWING

