

ALPINE SHALLOW 3.5IN

A1RD-W46, A1RD-W56 *Wall Wash*



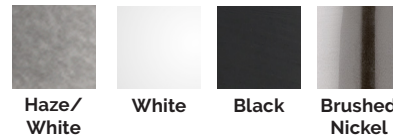
Fixture Type:

Catalog Number:

Project:

Location:

FINISHES



Model	Beam		Color Temp		CRI	Lumens	Finish
A1RD-W46 (Round)	A	Asymmetrical	27	2700K	90	720	HZWT Haze/White WT White BKWT Black/White BN Brushed Nickel
			30	3000K	90	745	
A1RD-W56 (Square)	A	Asymmetrical	27	2700K	90	690	
			30	3000K	90	715	
A1RD-W_6A-____ Example: A1RD-W46A-27WT							

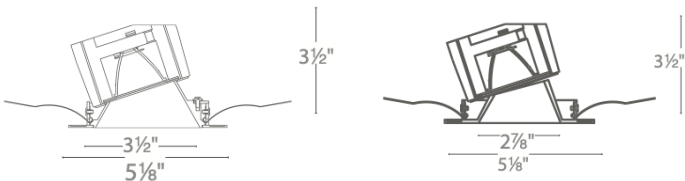
DESCRIPTION

Shallow housing that is designed to fit in tight plenum spaces without sacrificing lumen output.

FEATURES

- Designed to fit in tight plenum
- Wet location listed for trims
- 3.5" trim aperture, 3.5" housing height
- Universal input voltage (120V-277V)
- 5 year WAC Lighting product warranty
- Title 24 Compliant

LINE DRAWING



SPECIFICATIONS

Construction:	Die-cast aluminum trim with extruded aluminum heat sink
Dimming:	100% - 0% with 0-10V dimmer 100% - 5% with Electronic Low Voltage (ELV) dimmer
Input:	120V-277V AC
Power:	15.5W, power factor 0.98
Mounting:	Retention clips firmly hold trim to housing
Finish:	Powder coated white and black, white, enamel coated haze
Standards:	ETL & cETL Listed, wet location listed trims IC-rated airtight housing
Ceiling thickness:	1/2" - 1 1/2"

aispire.com
Phone (800) 526.2588
Fax (800) 526.2585

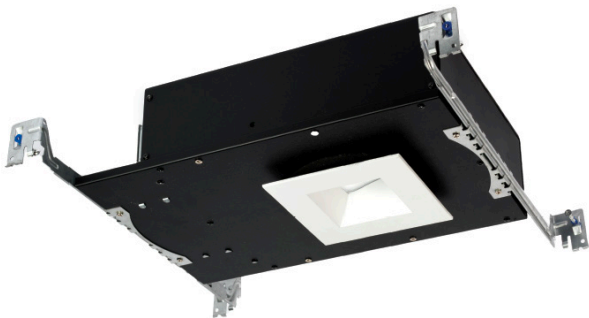
Headquarters/Eastern Distribution Center
44 Harbor Park Drive
Port Washington, NY 11050

Central Distribution Center
1600 Distribution Ct
Lithia Springs, GA 30122

Western Distribution Center
1750 Archibald Avenue
Ontario, CA 91760

ALPINE SHALLOW 3.5IN

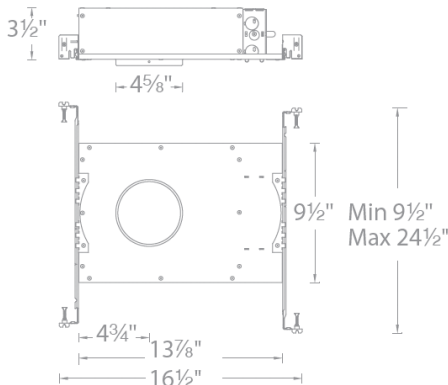
A1RD-268 Housing



Model

A1RD-268	New Construction IC-rated, Airtight
Example: A1RD-268	

LINE DRAWING



ALPINE SHALLOW 3.5IN

A1RD-366 Housing



Model

A1RD-366	Remodel non IC - Rated
Example: A1RD-366	

LINE DRAWING

