

ALPINE SHALLOW 3.5IN

A1RD-W47, A1RD-W57 Trimless WallWash



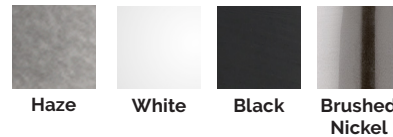
Fixture Type:

Catalog Number:

Project:

Location:

FINISHES



Model	Beam		Color Temp		CRI	Lumens	Finish
A1RD-W47 (Round)	A	Asymmetrical	27 30	2700K 3000K	90 90	720 745	HZWT Haze WT White BKWT Black BN Brushed Nickel
A1RD-W57 (Square)	A	Asymmetrical	27 30	2700K 3000K	90 90	690 715	
A1RD-W_7A-_____ Example: A1RD-W47A-27WT							

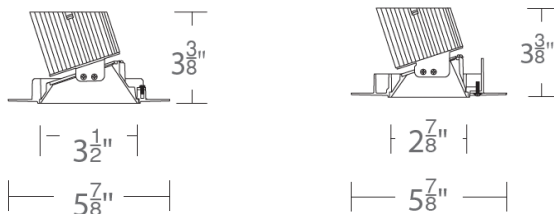
DESCRIPTION

Shallow housing that is designed to fit in tight plenum spaces without sacrificing lumen output.

FEATURES

- Designed to fit in tight plenum
- Wet location listed for trims
- 3.5" trim aperture, 3.5" housing height
- Universal input voltage (120V-277V)
- 5 year WAC Lighting product warranty
- Title 24 Compliant

LINE DRAWING

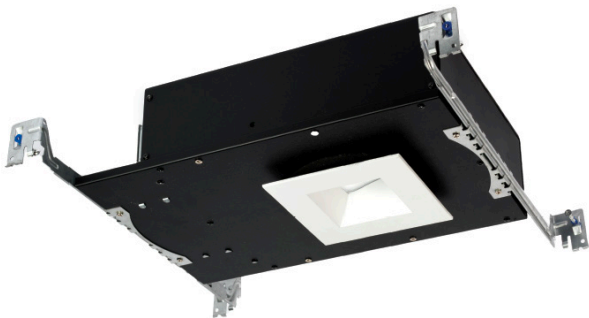


SPECIFICATIONS

Construction:	Die-cast aluminum trim with extruded aluminum heat sink
Dimming:	100% - 0% with 0-10V dimmer 100% - 5% with Electronic Low Voltage (ELV) dimmer
Input:	120V-277V AC
Power:	15.5W, power factor 0.98
Mounting:	Retention clips firmly hold trim to housing
Finish:	Powder coated white and black, white, enamel coated haze
Standards:	ETL & cETL Listed, wet location listed trims IC-rated airtight housing
Ceiling thickness:	1/2" - 1 1/2"

ALPINE SHALLOW 3.5IN

A1RD-268 *Housing*



Model

A1RD-268	New Construction IC-rated, Airtight
Example: A1RD-268	

LINE DRAWING

