

ALPINE 3.5" LED RECESSED

New Construction and Remodel Housing



SPECIFICATIONS

Construction:	Die-cast Aluminum trim and heat sink
Dimming:	100%-1% TRIAC, ELV, 100%-5% 0-10V
Input:	120-277VAC
Cut out:	New Construction 4¼", Remodel 3 ⅞ (Round) New Construction 4¼" x 4¼", Remodel 3 ⅞ x 3 ⅞ (Square)
Ceiling Thickness:	1/2" - 1"
Mounting:	Retention Clips firmly hold light engine to housing
Standards:	UL & cUL
Warranty:	5 year WAC Lighting product warranty

Fixture Type:

Catalog Number:

Project:

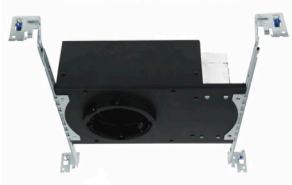
Location:

HOUSINGS	Model	Rating	Color Temp
Round	A1RE-248M <i>Round New Construction</i>	IC Airtight	27 2700K 30 3000K
	A1RE-346M <i>Round Remodel Trim</i>	Non IC	27 2700K 30 3000K
	A1RE-347M <i>Round Remodel Trimless</i>	Non IC	27 2700K 30 3000K
Square	A1RE-258M <i>Square New Construction</i>	IC Airtight	27 2700K 30 3000K
	A1RE-356M <i>Square Remodel Trim</i>	Non IC	27 2700K 30 3000K
	A1RE-357M <i>Square Remodel Trimless</i>	Non IC	27 2700K 30 3000K

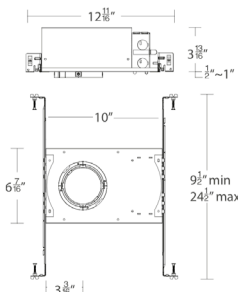
A1RE-___M-__

Example: A1RE-248M-27

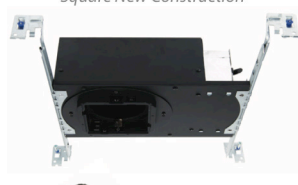
Round New Construction



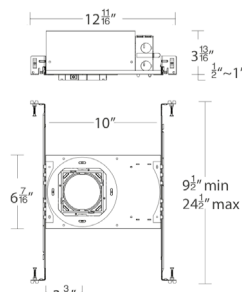
- Trimless: Die-cast spackle frame included



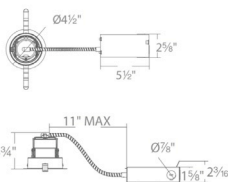
Square New Construction



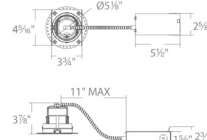
- Trimless: Die-cast spackle frame included



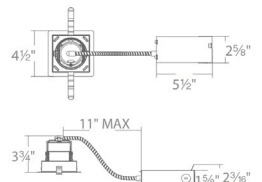
Round Remodel Trim



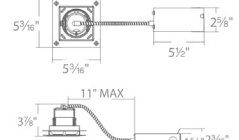
Round Remodel Trimless



Square Remodel Trim



Square Remodel Trimless



aispire.com
Phone (800) 526.2588
Fax (800) 526.2585

Headquarters/Eastern Distribution Center
44 Harbor Park Drive
Port Washington, NY 11050

Central Distribution Center
1600 Distribution Ct
Lithia Springs, GA 30122

Western Distribution Center
1750 Archibald Avenue
Ontario, CA 91760