

# ALPINE 3.5" LED RECESSED

## New Construction and Remodel Housing



### SPECIFICATIONS

<b>Construction:</b>	Die-cast Aluminum trim and heat sink
<b>Dimming:</b>	100%-1% TRIAC, ELV, 100%-5% 0-10V
<b>Input:</b>	120-277VAC
<b>Cut out:</b>	New Construction 4 1/4", Remodel 3 7/8" (Round) New Construction 4 1/4" x 4 1/4", Remodel 3 7/8" x 3 7/8" (Square)
<b>Ceiling Thickness:</b>	1/2" - 1"
<b>Mounting:</b>	Retention Clips firmly hold light engine to housing
<b>Standards:</b>	UL & cUL
<b>Warranty:</b>	5 year WAC Lighting product warranty

Fixture Type: \_\_\_\_\_

Catalog Number: \_\_\_\_\_

Project: \_\_\_\_\_

Location: \_\_\_\_\_

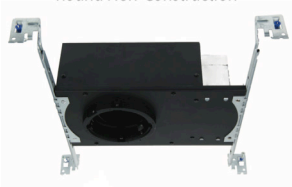
### HOUSINGS

	Model	Rating	Color Temp
Round	<b>A1RE-248M</b> <i>Round New Construction</i>	IC Airtight	<b>27</b> <b>30</b> 2700K 3000K
	<b>A1RE-346M</b> <i>Round Remodel Trim</i>	Non IC	<b>27</b> <b>30</b> 2700K 3000K
	<b>A1RE-347M</b> <i>Round Remodel Trimless</i>	Non IC	<b>27</b> <b>30</b> 2700K 3000K
Square	<b>A1RE-258M</b> <i>Square New Construction</i>	IC Airtight	<b>27</b> <b>30</b> 2700K 3000K
	<b>A1RE-356M</b> <i>Square Remodel Trim</i>	Non IC	<b>27</b> <b>30</b> 2700K 3000K
	<b>A1RE-357M</b> <i>Square Remodel Trimless</i>	Non IC	<b>27</b> <b>30</b> 2700K 3000K

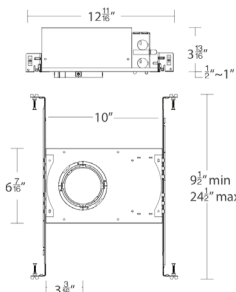
### A1RE-\_\_\_M-\_\_

Example: **A1RE-248M-27**

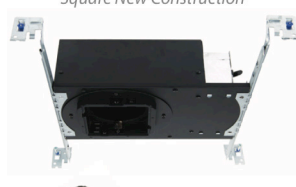
Round New Construction



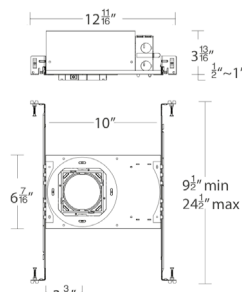
- Trimless: Die-cast spackle frame included



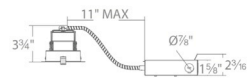
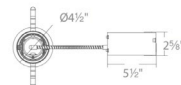
Square New Construction



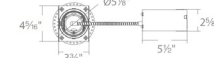
- Trimless: Die-cast spackle frame included



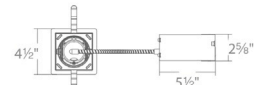
Round Remodel Trim



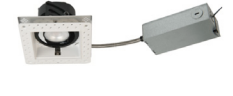
Round Remodel Trimless



Square Remodel Trim



Square Remodel Trimless



aispire.com  
Phone (800) 526.2588  
Fax (800) 526.2585

Headquarters/Eastern Distribution Center  
44 Harbor Park Drive  
Port Washington, NY 11050

Central Distribution Center  
1600 Distribution Ct  
Lithia Springs, GA 30122

Western Distribution Center  
1750 Archibald Avenue  
Ontario, CA 91760