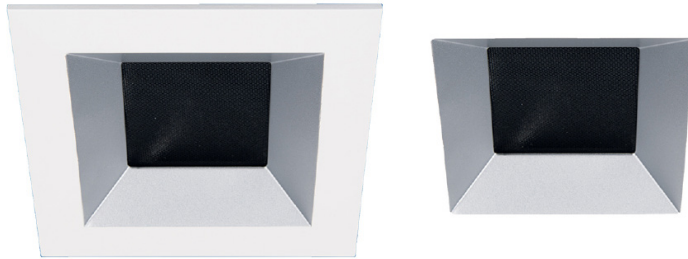


ASTRO 3.5" Adjustable Downlight

A1RE-D56-DW, A1RE-D57-DW



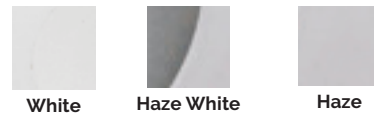
Fixture Type:

Catalog Number:

Project:

Location:

FINISHES



Model	Power	Beam	Color Temp	Max Lumens	Max CBCP	Finish
A1RE-D56-DW Square Trim Adjustable Downlight	13W	Narrow Flood 34°	3000K-1800K	865	2165	WT White
		Flood 60°		790	665	HZWT Haze White
A1RE-D57 -DW Square Trimless Adjustable Downlight	16W	Narrow Flood 34°	3000K-1800K	1025	2565	WT White
		Flood 60°		930	790	HZWT Haze White

Example: A1RE-D56-DW-WT

DESCRIPTION

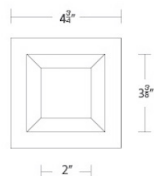
The brilliant LED recessed downlight that gradually changes to a warmer color temperature as you dim. Great for new construction projects or remodels.

FEATURES

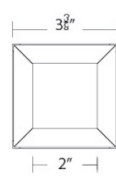
- 2 beam angle options included - Narrow flood beam pre-installed, interchangeable flood beam film supplied
- Non IC and IC-Rated, Airtight, New Construction, Remodel
- Adjustable LED light engine included with housing: Vertical Adjustment 0-30°, Horizontal Adjustment 360°
- Shallow housing under 4" depth
- 5 year warranty

LINE DRAWING

A1RE-D56-DW
Square Trim
Adjustable Downlight



A1RE-D57-DW
Square Trimless
Adjustable Downlight



SPECIFICATIONS

Construction:	Die-cast aluminum trim and heat sink
Power:	13W/16W
Input:	120V-277V 50/60Hz
Dimming:	100% - 1% TRIAC, ELV 100% - 5%, 0-10V
Light Source:	CRI 95 high output COB LED rated life of 50,000 hours
Mounting:	Retention clips firmly hold trim to housing. Cutout 4 1/4"
Finish:	Powder coated white, haze.
Ceiling Thickness:	1/2" - 1"
Operating Temp:	-4°F to 104°F (-20°C to 40°C)
Standards:	UL & cUL, Wet Location listed, Title 24 JA8-2019 Compliant

aispire.com
Phone (800) 526.2588
Fax (800) 526.2585

Headquarters/Eastern Distribution Center
44 Harbor Park Drive
Port Washington, NY 11050

Central Distribution Center
1600 Distribution Ct
Lithia Springs, GA 30122

Western Distribution Center
1750 Archibald Avenue
Ontario, CA 91760

Astro 3.5" Adjustable Downlight
A1RE-D56-DW, A1RE-D57-DW



Model	Model	Power		Color Temp
	A1RE-258M IC-Rated Airtight A1RE-158M Non IC- Rated Airtight	13W 16W	DW	3000K-1800K
	A1RE-356M Non IC- Rated Airtight	16W	DW	3000K-1800K
	A1RE-357M Non IC- Rated Airtight	16W	DW	3000K-1800K

Example: **A1RE-258M-DW**



FEATURES

- Dim to warm technology
- Line voltage direct to the housing with "Intuitive style" dimming that replicates halogen and incandescent warmth
- High lumen density for directional lighting
- Compatible with most single channel drivers and dimmer switches
- Up to 97CRI (typical) at 3000K dimming down to 1800K for residential and hospitality lighting
- Consistent white light <3 SDCM

APPLICATIONS

- Hospitality, hotel, and restaurant lighting
- Bedrooms, bathrooms, theaters, great rooms, and lower levels
- Retail shop lighting
- Public, commercial buildings

CCT CHANGE DIMMING CURVE

