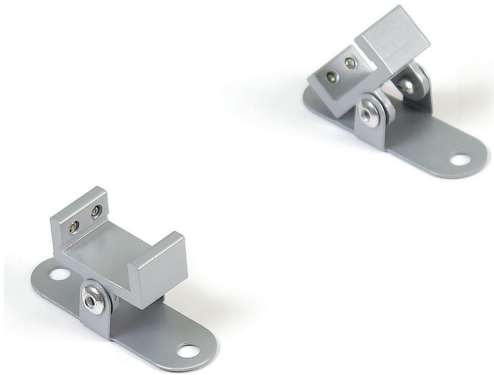


LINEAR CHANNEL MOUNTING CLIP

A2L11



Fixture Type: _____

Catalog Number: _____

Project: _____

Location: _____

FINISHES



Aluminum

Model

A2L11-AL

FEATURES

- Used to mount any aluminum channel
- Adjusts 50° from center either way.
- Includes 2 pieces, 4 screws
- 5 Year warranty

SPECIFICATIONS

Mounting: Can be mounted on ceiling or wall in all orientations

Finish: Aluminum

Operating Temp: -4°F to 104°F (-20°C to 40°C)

Standards: UL & cUL, Wet location listed.

