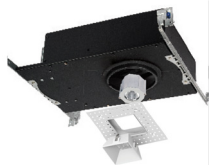


ATMOSPHERE RPS 3.5IN *New Construction Housing, IC-Rated, Airtight*

A2RD-268-CT

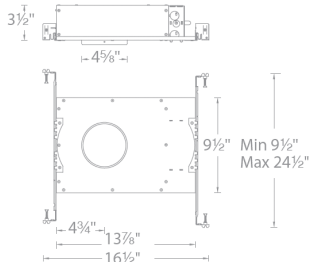
AiSPIRE
A W A C C O M P A N Y



Downlight and Invisible Trim



Adjustable and Wall Wash Trim



Fixture Type:

Catalog Number:

Project:

Location:

FINISHES



Black

Model

A2RD-268-CT

New Construction, IC-rated, Airtight

Example: A2RD-268-CT

DESCRIPTION

ATMOSPHERE RPS is a next level downlight, with an extreme-low profile that is designed to fit in tight plenum spaces without compromising lumen output or glare control. Choose from round or square, trim or trimless, and an array of finishes. With features such as vertical and horizontal adjustment. ATMOSPHERE RPS is suitable for a wide range of applications including residential, commercial, hospitality and architectural.

FEATURES

- For use with ATMOSPHERE RPS3.5IN series trims.
- IC-Rated and airtight
- Compatible with round/square downlight, adjustable, and wall wash fixtures, in trim and trimless offerings.
- AISPIRE remote power supply (RPS) required, sold separately.
- Provided with push-in wire connector for easy installation.
- 5 year product warranty

SPECIFICATIONS

Construction:	Housing and junction box, 20 gauge steel
J-Box:	8 knockouts for ease of installation. Rated for branch wiring.
Input:	Class 2 Low Voltage, DC Power Supply. Refer to trim specification for input requirements.
Power:	13W. Refer to trim specifications for consumptions data.
Dimming:	Refer to RPS specification for protocol and compatibility
Remote Power Supply (RPS):	A2D20-BK, A2D40-BK. Reference compatible RPS specification for further requirement.
Mounting:	Retention clips firmly hold trim to housing.
Ceiling Thickness:	1/2" - 1 1/2"
Cutout:	4 5/8"
Finish:	Powder coated black
Standards:	UL & cUL Listed, IC-Rated, Airtight

aispire.com
Phone (800) 526.2588
Fax (800) 526.2585

Headquarters/Eastern Distribution Center
44 Harbor Park Drive
Port Washington, NY 11050

Central Distribution Center
1600 Distribution Ct
Lithia Springs, GA 30122

Western Distribution Center
1750 Archibald Avenue
Ontario, CA 91760

AiSPiRE® Remote Power Supply (RPS)

A2D LED DMX Power Unit



Model	# of channels	Finish
A2D20 2 x 75W Class 2 output DMX LED power unit	4	BK Black
A2D40 4 x 75W Class 2 output DMX LED power unit	8	BK Black

Example: A2D20-BK

FINISHES



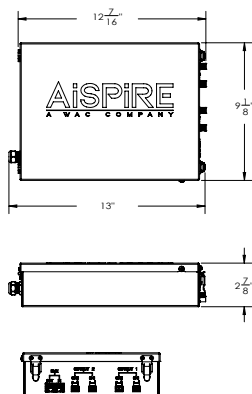
Black

FEATURES

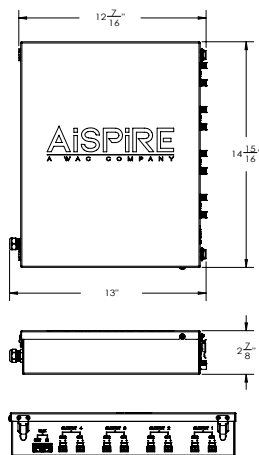
- 75W Max. Output Power (Per DMX Power Unit)
- 250mA-1500mA output current selection
- Class 2 power supply
- Built-in DMX512 interface
- IP20 rating
- UL Damp location listed

LINE DRAWING

A2D20 - 4 Channel



A2D40 - 8 Channel



INPUT

Voltage Range:	120VAC
Frequency Range:	50/60Hz
Power Factor:	0.99 @100VAC
THD:	<15% @full load
Current:	0.9A @100VAC
Standby Power Consumption:	<0.5w

OUTPUT

LED Channels:	APD20-BK: 4 Channels APD40-BK: 8 Channels
Selectable Current:	250mA, 300mA, 350mA, 400mA, 450mA, 500mA, 600mA, 700mA, 800mA, 900mA, 1A, 1.1A, 1.2A, 1.3A, 1.4A, 1.5A
DC Voltage Range:	6-48VDC
Current Tolerance:	± 3%
Rated Power:	72W per channel 75W max (per 2-channel output)

CONTROL

Control Protocol:	DMX 512-A, DMX 512
Dimming Range:	0%-100%
Control Input:	DMX RJ45
Dimming Curve:	Linear/Logarithm (Selectable)

PROTECTION

Short Circuit, Over Voltage, Over Temp:	Recovers automatically after fault condition is removed
--	---

ENVIRONMENT

Ambient Operating Temp:	-4°F - 113°C (-20°F - 45°C)
--------------------------------	-----------------------------

SAFETY & EMC

- Safety Standard: UL 2018, Damp Location
- EMC Emission: FCC Part 15 Class B
- Surge Immunity: Line-Line 1 kV

aispire.com
Phone (800) 526.2588
Fax (800) 526.2585

Headquarters/Eastern Distribution Center
44 Harbor Park Drive
Port Washington, NY 11050

Central Distribution Center
1600 Distribution Ct
Lithia Springs, GA 30122

Western Distribution Center
1750 Archibald Avenue
Ontario, CA 91760



Spectral Matching to Natural Light

- ATMOSPHERE technology delivers optimized spectral syncing to natural light in a tunable white solution
- ATMOSPHERE maximizes the emotional elements of light and color to deliver a first class human experience
- ATMOSPHERE significantly reduces the blue spike and cyan valley to deliver a closer match to natural light

What is Human Centric Lighting (HCL)

- Throughout evolution, the human visual system has evolved under the natural light of sun and fire.
- Human-centric lighting by definition encompasses the effects of lighting on the physical and emotional being of people.
- As part of the HCL initiative, there is a drive to develop "natural" sources of lighting. The human species has been conditioned to function in daylight hours by the light of the sun, and after dusk, of the warm glow of fire. Thus, we define natural light sources as those which match the spectral distribution of sunlight and firelight.

Human Centric Light Spectrum

FEATURES	BENEFITS
Spectrum engineered to closely emulate natural light with reduced short blue wavelength intensity	Full, consistent light spectrum with fewer spectral spikes, the closest match to natural light available
Natural and vivid color rendering	Typical 98 CRI. Excellent TM-30 metrics; Skin tones and artwork render impeccably
High efficacy human-centric spectra	Greater energy savings, lower utility and environment costs
Affordable spectra optimized for humans	Accelerate adoption of full spectrum natural lighting