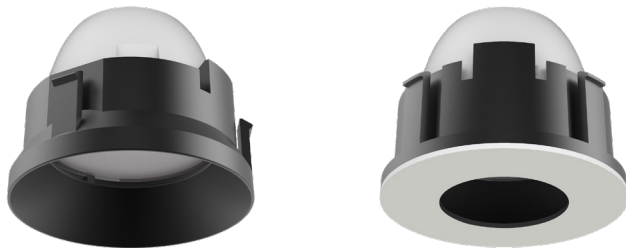


# Alpine Micro

## A2RU-D47M, A2RU-P47M - Round Downlight and Pinhole



Fixture Type:

Catalog Number:

Project:

Location:

### PRODUCT DESCRIPTION

Minuscule and mighty, peerless and powerful, the new potent Alpine Micro launches into the light. An engineering recessed marvel for next generation futurists. Sublime and serviceable, it's an icon for the ages. Alpine Micro breaks the mold with robust illumination from a diminutive aperture, for a clean, quiet ceiling.

### FEATURES

- Robust lumen output from 1" or 1/2" aperture
- Low glare for good visual comfort
- Field changeable beam angle with reflectors provided
- Low profile housing for installation in shallow plenums
- 5 year warranty

### SPECIFICATIONS

<b>Construction:</b>	Injection molded polycarbonate low glare trim
<b>Dimming:</b>	100% - 1% ELV, TRIAC and 0-10V
<b>Input Power:</b>	11W
<b>Light Source:</b>	High output COB LED rated life of 50,000 hours
<b>Finish:</b>	Black, Gold, Haze, White
<b>Ceiling thickness:</b>	½" - 2"
<b>Standards:</b>	ETL & cETL Wet location listed, IC rated Airtight Title 24 JA8 Compliant

Trims (Order Housing and Power Supply Separately)	Model	Beam	Color Temp	CRI	Lumens	CBCP	Finishes
	<b>A2RU-D47M</b> Round Downlight Trimless (N, F, W beam reflectors included)	N 26°	2700K 3000K 3500K 4000K	90	880 945 1015 1080	2755 2960 3170 3375	<b>BK GL HZ WT</b> Black Gold Haze White
		F 36°	2700K 3000K 3500K 4000K	90	895 960 1025 1095	2300 2470 2645 2820	
		W 55°	2700K 3000K 3500K 4000K	90	760 815 875 930	730 785 840 895	
	<b>A2RU-P47M</b> Round Pinhole (N, F beam reflectors included)	N 26°	2700K 3000K 3500K 4000K	90	430 460 495 525	1715 1845 1975 2105	<b>BK WT</b> Black White
		F 32°	2700K 3000K 3500K 4000K	90	465 500 535 570	1490 1600 1715 1825	

### A2RU-\_\_\_\_-\_\_\_\_

Example: **A2RU-D47M-WT**

Please see next page for housing and power supply units (required)

Housing (Required) - Order separately from trims

Model	Forward Voltage	Max. Driver Current	Power	Color Temp	CRI
<b>A2RU-447</b> Round Trimless IC-Rated, Airtight	18V	600mA	11W	<b>27</b> 2700K	90
				<b>30</b> 3000K	
				<b>35</b> 3500K	
				<b>40</b> 4000K	

**A2RU-447----**Example: **A2RU-447-27**

Frame-In Kit (Optional) - Order separately from housings

Model	Description
<b>A2RU-167</b>	Frame-In kit for new construction installations

Example: **A2RU-167**

Remote Power Supply (Required) - Order separately from trims and housings

Model	Input	Output	Max # of fixtures per channel	Dimmable	
<b>A2D60-0600A1</b>	120V - 277V	1 Channel UL Class 2	1 per Channel	100%-1% ELV, TRIAC, 0-10V	8 3/4" x 2" x 1 3/8"
<b>A2D60-0600A6</b>	120V - 277V	6 Channels UL Class 2	1 per Channel	100%-1% ELV, TRIAC, 0-10V	10 7/8" x 3 7/8" x 1 3/8"
<b>A2D20-BK</b>	120V	4 Channels UL Class 2	Up to 2 per Channel	100%-1% DMX 512-A, DMX 512	12 7/16" x 9 1/8" x 2 7/8"
	120V	8 Channels UL Class 2	Up to 2 per Channel	100%-1% DMX 512-A, DMX 512	12 7/16" x 14 15/16" x 2 7/8"

Example: **A2D60-0600A6**

Home-run wiring. Recommended maximum distance between power supply and compatible light fixture is shown in below table:

	18 AWG	16 AWG	14 AWG	12 AWG
Maximum distance between power supply and light fixture	100 ft	150 ft	200 ft	250 ft

Accessory (Sold Separately)

Model	Description
<b>A2RU-TOOL</b>	Service tool for removing trim and light engine

Example: **A2RU-TOOL**